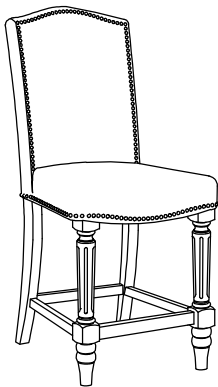
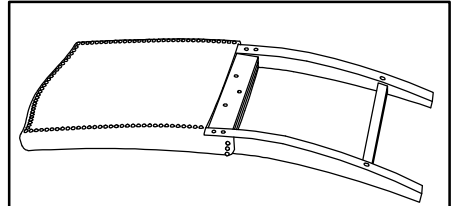


Step	Code	Hardware	Q'TY
	A	Allen key 4mm dia.	1 Pc
1	B	Short Bolt 1/4" x 20 x 1 1/2"	2 Pcs
		Spring Washer 5/16" x 19 x 2mmT	
		Flat Washer 5/16" x 11 x 2mmT	
	C	Long Bolt 5/16" x 18 x 3-3/8"	4 Pcs
		Spring Washer 5/16" x 19 x 2mmT	
		Flat Washer 5/16" x 11 x 2mmT	
2	D	Wood Screws 5/32" x 1 3/4"	2 Pcs
3A	D	Wood Screws 5/32" x 1 3/4 "	2 Pcs
3B	E	Long Bolt 5/16" x 18 x 3-3/8"	4 Pcs
		Spring Washer 5/16" x 19 x 2mmT	
		Flat Washer 5/16" x 11 x 2mmT	
	D	Wood Screws 5/32" x 1 3/4"	2 Pcs

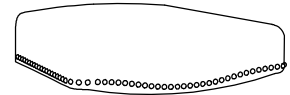


Tool Required: Phillips screwdriver
(not provided)

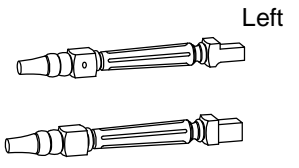
PARTS LIST



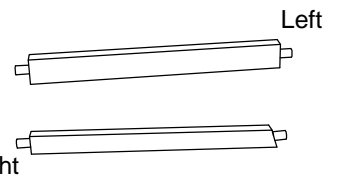
1. Stool Back - 1 Pc



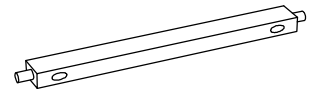
2. Seat - 1 Pc



3. Front Legs - 2 Pcs



4. Side Stretchers - 2 Pcs



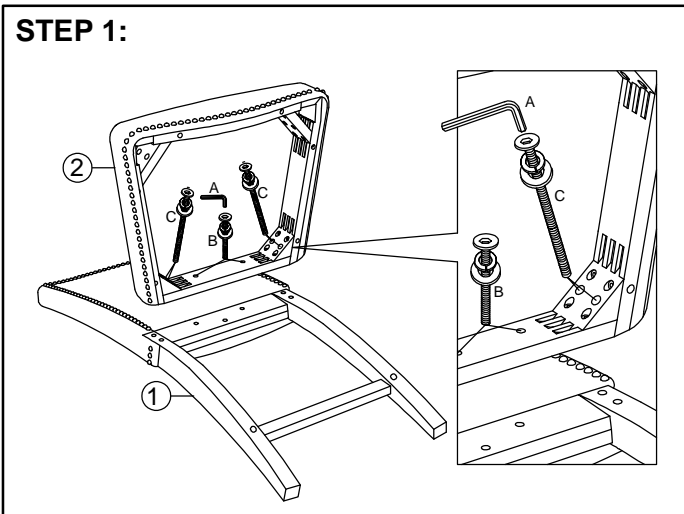
5. Front Stretcher - 1 Pc

HARDWARE PACK FOR 2 PCS STOOL LOCATION(S):

PNWD 2290-GC CNT HGT STOOL SKU# 43422904

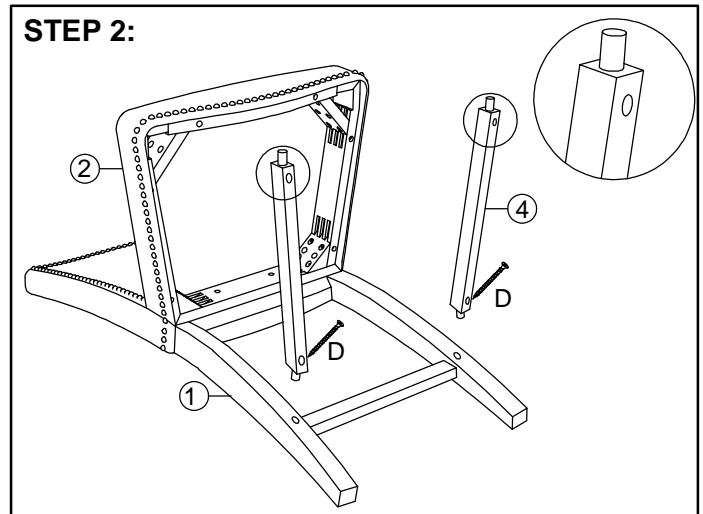
***Cautions: Please read all instructions carefully before starting the assembly process. These parts are cumbersome and heavy. Therefore, two people are recommended in order to prevent personal injury and insure the parts are not damaged during the assembly.

STEP 1:



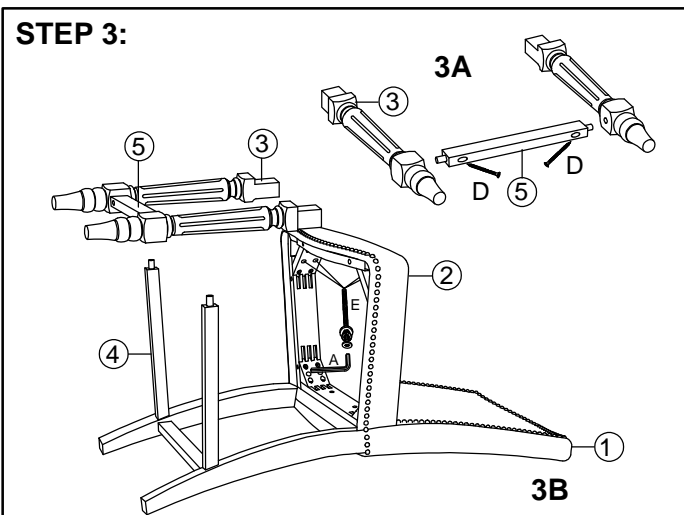
Attach the seat frame to the stool backrest
 Note: Do not tighten all screws & bolts until the seat is fully assembled.

STEP 2:



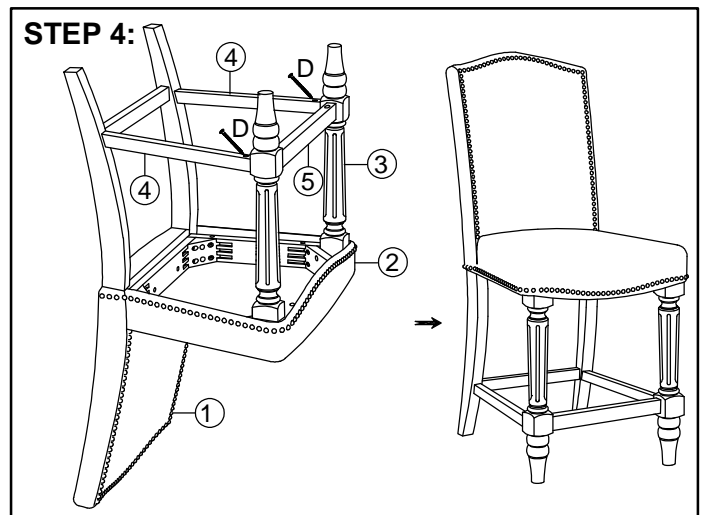
Attach the side stretchers to the back legs.

STEP 3:



3A: Attach front stretcher between right leg and left leg.
 3B: Attach the front legs to side stretcher and seat.

STEP 4:



Secure the side stretchers to the front legs. Then, turn stool to the upright position, apply firm pressure to align and fully tighten all bolts and screws.