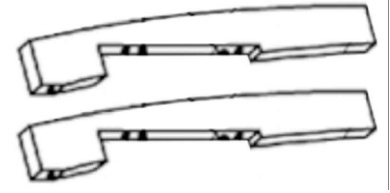


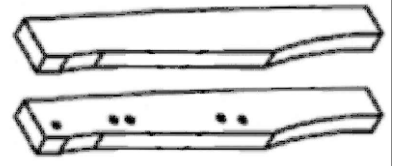
ASSEMBLY INSTRUCTIONS

GLOB 4302-4 SERVER SKU# 43843021

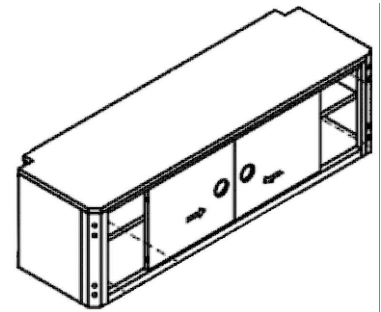
STEP	CODE	HARDWARE	Q'TY
1	A	Allen Wrench	1 pc
	B	Bolt Ø5/16" x 18 x 1-1/2"	12 pcs
		Spring washer Ø5/16"	12 pcs
		Flat washer Ø5/16"	12 pcs
C	Wooden dowel Ø3/8" x 1-1/8"	8 pcs	
2	D	Anti-tipping Kit	1 pc



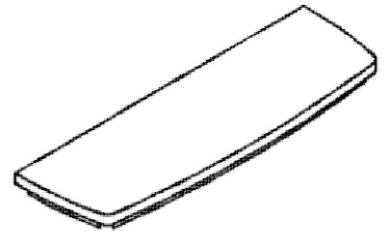
1. Front Leg - 2 pcs



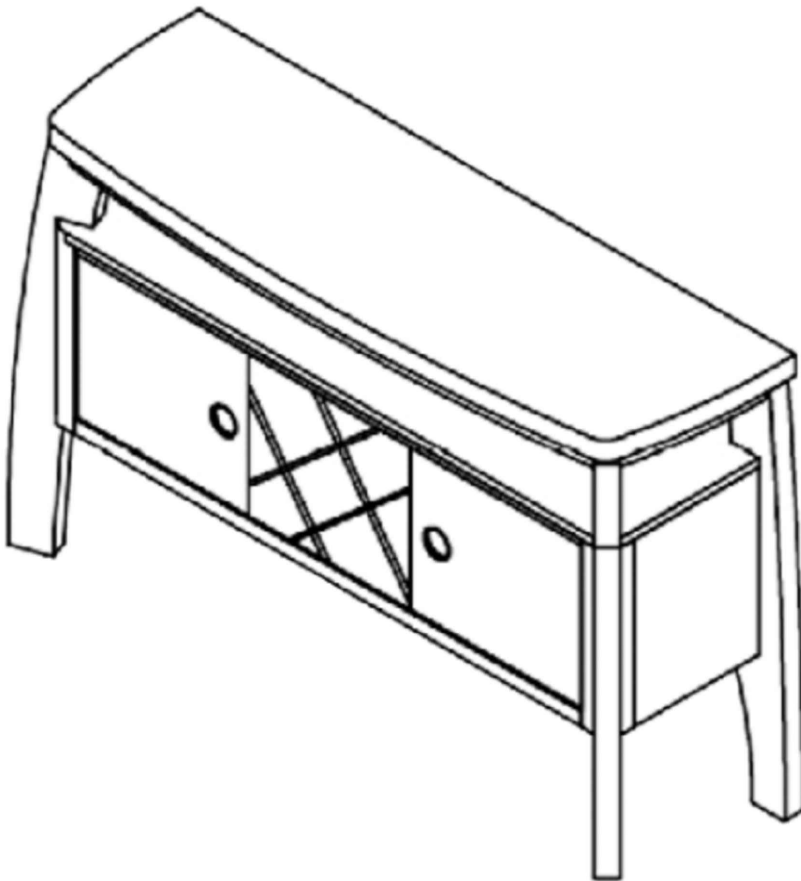
2. Back Leg - 2 pcs



3. Server - 1pc



4. Wooden Top - 1pc



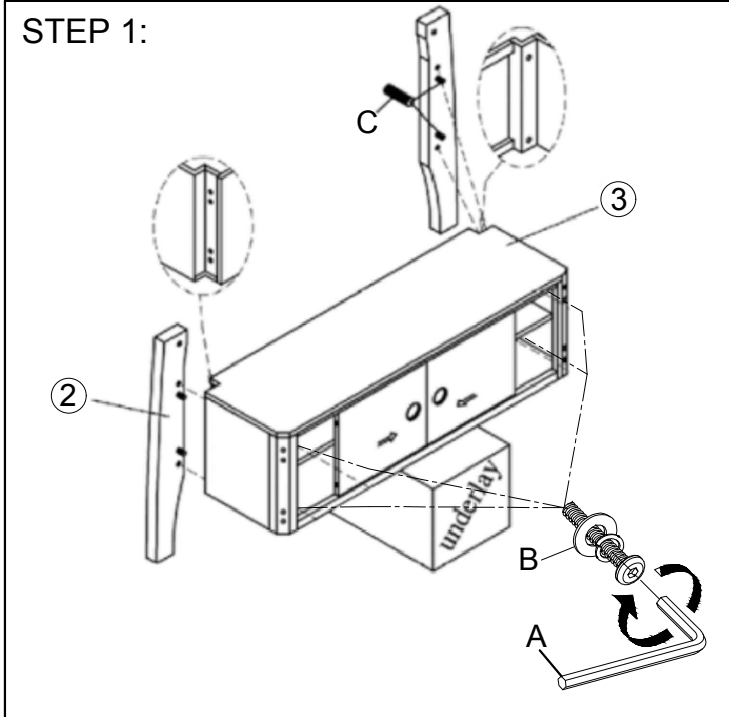
Hardware Pack Location (s) :
4302-4 SERVER SKU# 43843021

ASSEMBLY INSTRUCTIONS

GLOB 4302-4 SERVER SKU# 43843021

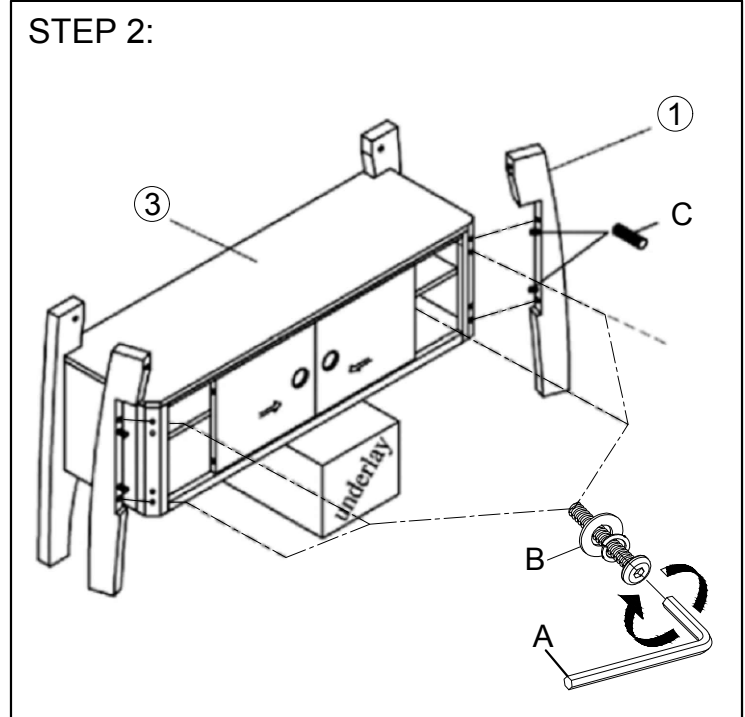
***Cautions: Please read all instructions carefully before starting the assembly process. These parts are cumbersome and heavy. Therefore, two people are recommended in order to prevent personal injury and ensure the parts are not damaged during the assembly.

STEP 1:



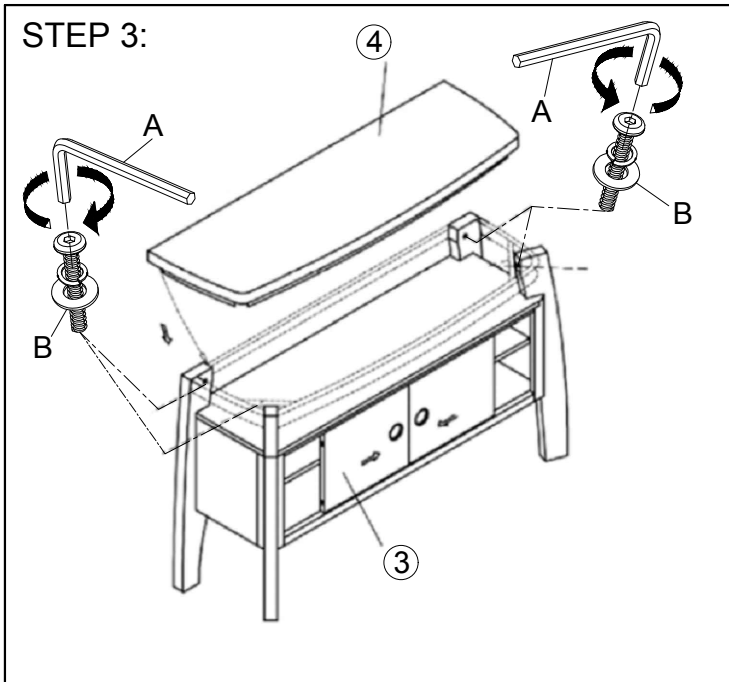
Attach the Back Legs (2) to the Server (3) by hardware with Allen Wrench.

STEP 2:



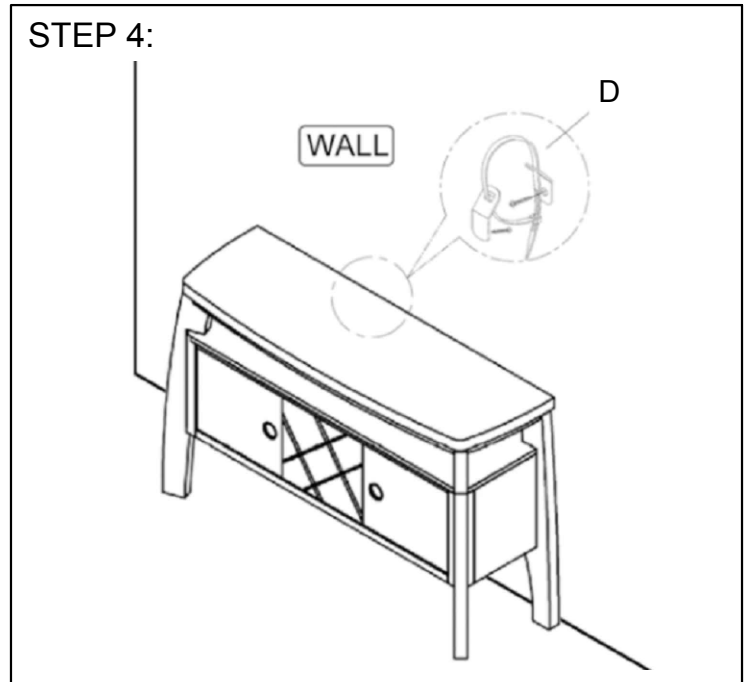
Attach the Front Legs (1) to the Server (3) by hardware with Allen Wrench.

STEP 3:



To put Wooden Top (4) to the Server (3) by hardware with Allen Wrench.

STEP 4:



To attach Server to wall with anti-tipping kit.

Note:

- *Keep all hard wave parts out of children's reach
- *Keep these instructions for future reference.