



ALL DESIGNS ARE
PROPERTY OF BEDGEAR

REVISION DATE:	10/31/23	
PART #:	40-8254-BG-S-SH-INSTR-2310	
PRODUCT:	SPLIT HEAD SHEETS INSTRUCTIONS	SIZE: N/A
TECHNOLOGY:	N/A	WARRANTY: N/A
PKG TYPE:	INSERT	
PAPER WEIGHT:	300 GRAMS	
PAPER FINISH:	MATTE LAMINATE	

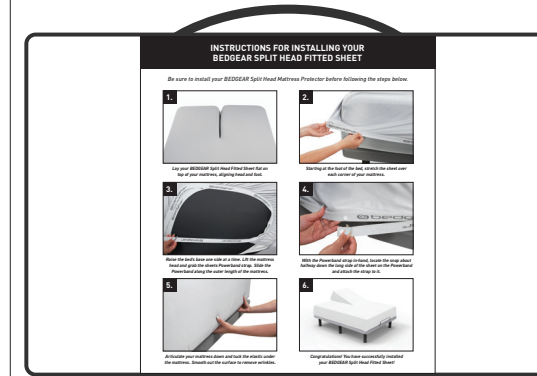
COLORS:



LEGEND: (DO NOT PRINT)

- TRIMLINE ———
- FOLD - - - - -
- BLEED ———
- SAFETY ———
- NO TEXT

PUT UP:



SCAN FOR DEMO VIDEO



HOW TO ATTACH YOUR BEDGEAR SPLIT HEAD FITTED SHEET

Be sure to wash your new sheet set before use for optimal performance.



1. Lay your BEDGEAR Split Head Fitted Sheet flat on top of your mattress, aligning head and foot.



2. Starting at the foot of the bed, stretch the sheet over each corner of your mattress.



3. Raise the bed's base one side at a time. Lift the mattress head and grab the sheets Powerband strap. Slide the Powerband along the outer length of the mattress.



4. With the Powerband strap in-hand, locate the snap about halfway down the long side of the sheet on the Powerband and attach the strap to it.



5. Articulate your mattress down and tuck the elastic under the mattress. Smooth out the surface to remove wrinkles.



6. Congratulations! You have successfully installed your BEDGEAR Split Head Fitted Sheet!

8"

7"

BILL OF MATERIALS

ITEM	REFERENCE	PLACEMENT	QTY	DESCRIPTION	SOURCE
INSERT	BG-S-DT-MW-BK	BACK OF BAG	1	DRI-TEC SHEET SET INSERT, MANU WARRANTY, BACK	LOCAL
INSERT	BG-S-DT-MW	FRONT OF BAG	1	DRI-TEC SHEET SET INSERT, FRONT	LOCAL
BAG	VZB-0001-B	-	1	STANDARD BEDGEAR BAG WITH HANDLE NO PATTERN	LOCAL
SIZE STICKER	BG-S-SS	FRONT OF BAG, TOP RIGHT CORNER	1	SHEET SET SIZE STICKER	LOCAL
UPC STICKER	BG-S-DT-MW-UPC	BACK OF BAG OVER DESIGNATED RECTANGLE	1	UPC STICKER	LOCAL
AFC STICKER	BG-S-AFC-STK	FRONT OF BAG, BOTTOM RIGHT CORNER	1	AIRFLOW CERTIFIED STICKER	LOCAL

REVISIONS

DATE	REVISION DETAILS	REVISED BY
6/22/23	CREATED ARTWORK	TINA
7/10/23	UPDATED COPY IN STEP 1 AND STEP 4, CHANGED 6 PIC	TINA
7/20/23	UPDATED DIELINE	TINA
10/11/23	ADDED WASH BEFORE USE STATEMENT, ADDED QR CODE	AMANDA

ADDITIONAL COMMENTS: XXX