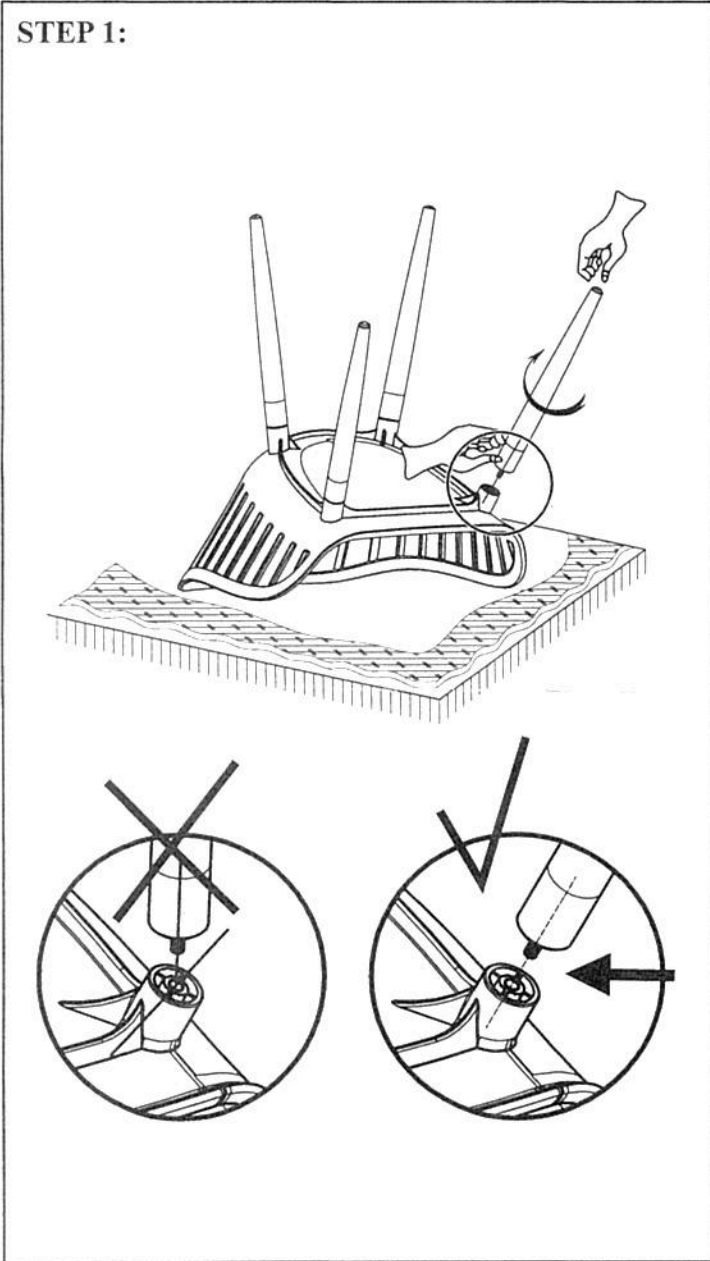


***Caution: Please read all instructions carefully before starting the assembly process. These parts are cumbersome and heavy. Therefore, two people are recommended in order to prevent personal injury and insure the parts are not damaged during the assembly.

STEP 1:



Attach the chair legs to assembled the bucket down on a flat and clean surface.
Hand tighten only.



Assembly Instructions

SCIT Nassau Carver Chair SKU# 74327341 / 74427343
SKU# 74527345 / 74627347



Hardware Pack Location(s):

SCIT Nassau Carver Chair SKU# 74327341 / 74427343
SKU# 74527345 / 74627347