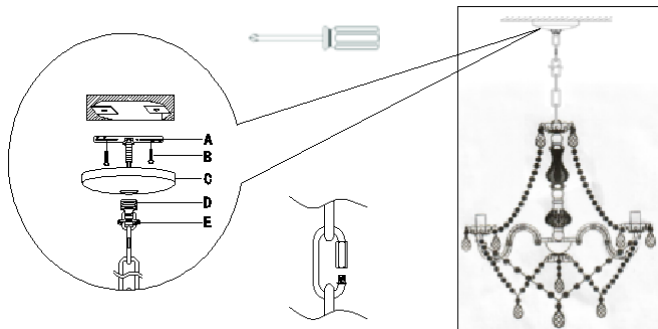


LITTLE PRINCESS DÉCOR

99201279 TL91056BRTG PINK ACRYLIC CHANDELIER

Diagram 1



ASSEMBLY INSTRUCTIONS:

Carefully unpack parts from carton, remove covering from parts and check that all parts are included as shown in the illustration.

Diagram 1

1. Install as shown in the figure, as shown on the right. Use screw driver (not supplied) when assembly part A and B.

Diagram 2

2. Gently move 6 arms to open position.
3. Put cord through neck from the top.
4. Screw the center column onto base until completely tightened.

Diagram 3

5. Hang 6 x Bead-string(B) on the arms.
6. Hang 2 x Bead-string(C) on the arms.

Diagram 4

7. Put 6 x Sconce(A) on the lampholder tube.
8. Screw bulb(excl) in the lampholder.

Diagram 2

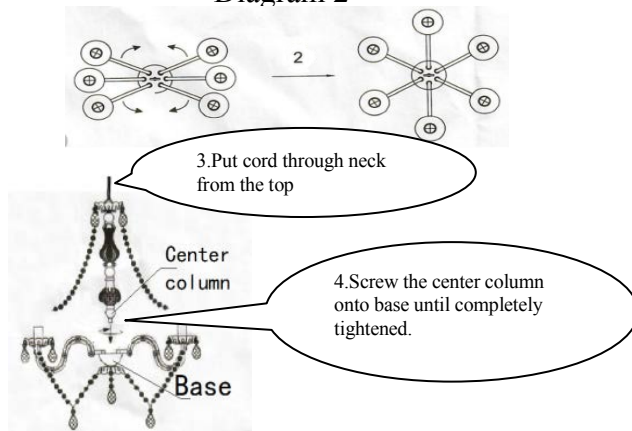


Diagram 3

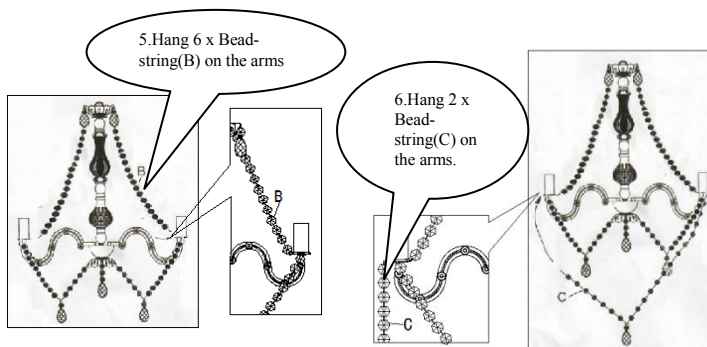
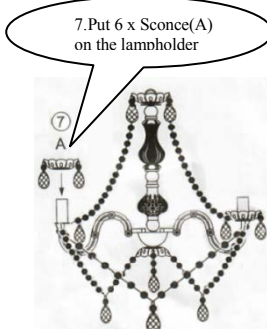


Diagram 4



GENERAL PRODUCT INFORMATION:

This lamp is meant for indoor use
.Dry locations only.



IMPORTANT SAFETY

INSTRUCTIONS: This portable luminaire has a polarized plug (one blade is wider than the other) as a safety feature to reduce risk of electric shock. This plug will fit in a polarized outlet only one way. If the plug does not fit fully in the outlet, reverse the plug. If it still does not fit, contact a qualified electrician. Never use with an extension cord unless plug can be fully inserted.

Do not alter the plug.

Do not attempt to defeat this safety feature.

BULB TYPE: six type B Max25W bulbs(bulb not included).

DO NOT USE SUBSTITUTE PARTS. PLEASE CONTACT YOUR RETAILSTORE OR WWW.ROOMSTOGO.COM WITH SERVICE OR PARTS REPLACEMENT REQUEST.

LITTLE PRINCESS DÉCOR

99201279 TL91056BRTG PINK ACRYLIC CHANDELIER

IMPORTANT SAFETY INSTRUCTIONS



Read all instructions before using this furnishing.

DANGER - To reduce the risk of electric shock.

- This portable lamp has a polarized plug (one blade is wider than the other) as a safety feature to reduce the risk of electric shock.
- This plug will fit in a polarized outlet only one way.
- If the plug does not fit fully in the outlet, reverse the plug.
- If it still does not fit, contact a qualified electrician.
- Never use with an extension cord unless the plug can be fully inserted.
- Do not alter the plug.

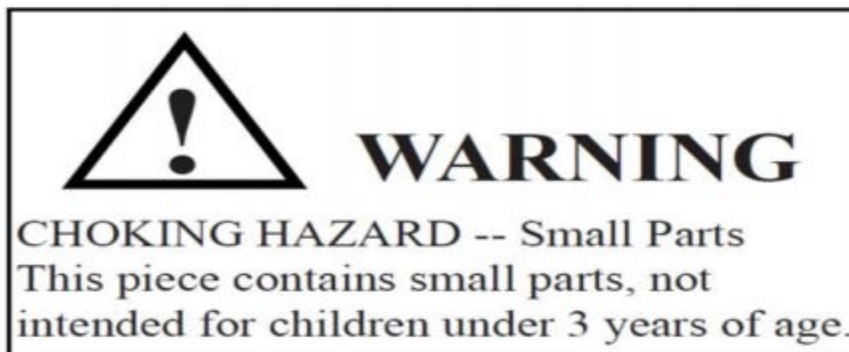
INSTRUCCIONES DE SEGURIDAD IMPORTANTES



Leer todas las instrucciones antes de usar este mobiliario.

PELIGRO - Para reducir el riesgo de descargas eléctricas.

- Este enchufe encajará en una salida polarizada de una sola manera.
- Esta lámpara portátil tiene un enchufe polarizado (una hoja es más ancha que la otra) como característica de seguridad para reducir el riesgo de descarga eléctrica.
- Si el enchufe no encaja completamente en el tomacorriente, invierta el enchufe.
- Si aún no encaja, comuníquese con un electricista calificado.
- Nunca lo use con un cable de extensión a menos que el enchufe se pueda insertar completamente.
- No altere el enchufe.



DO NOT USE SUBSTITUTE PARTS. PLEASE CONTACT YOUR RETAIL STORE OR WWW.ROOMSTOGO.COM WITH SERVICE OR PARTS REPLACEMENT REQUEST.

This product is manufactured by (STYL) for

ROOMS TO GO

KIDS™ PAGE 2/2